

# International Navigating Conditions (01/11/03)

## Northern Seas

### ■ Navigating Limits

Unless and to the extent otherwise agreed by the Underwriters, the vessel shall not enter, navigate or remain in the areas specified below at any time or, where applicable, between the dates specified below (both days inclusive):

#### Area 2 – Northern Seas

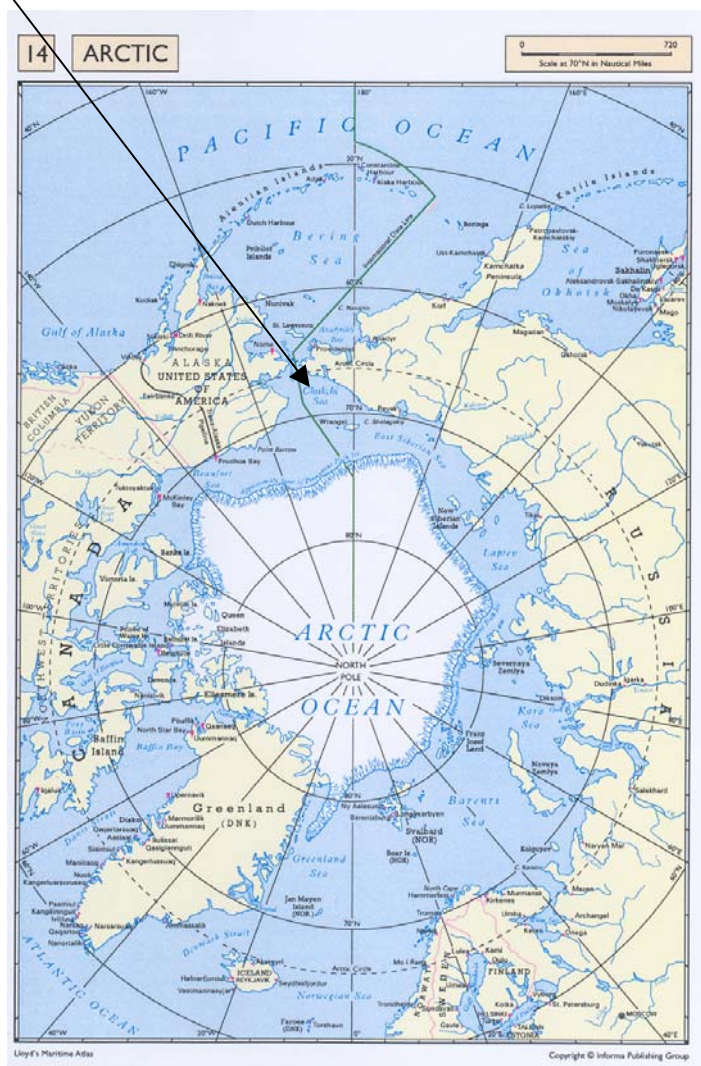
##### (a) White Sea



Map courtesy of Lloyd's Marine Intelligence Unit , [www.lloydsmiu.com](http://www.lloydsmiu.com)

Any conditions herein are non-binding and set out by way of guidance only.  
Underwriters are free to offer any conditions they deem appropriate.

(b) Chukchi Sea



Map courtesy of Lloyd's Marine Intelligence Unit , [www.lloydsniu.com](http://www.lloydsniu.com)

## ■ Perceived Degree of Enhanced Risk

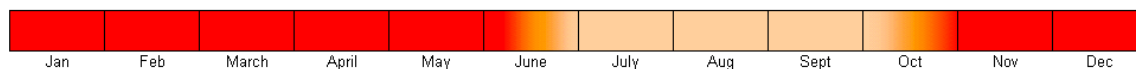
### Perceived Degree of Enhanced Risk



#### Area 2(a) White Sea



#### Area 2(b) Chukchi Sea



n.b. Above enhanced risk indicators are based on expected seasonal conditions for this region.

## ■ Conditions Precedent to Liability and/or Express Warranties

The following conditions are available for Underwriters' use:-

- *Breach of Navigating Limit Requirements Clause JH132 (31/10/2003).*
- *A weather forecast to be obtained prior to navigation into the restricted area.*
- *The vessel shall have a Russian speaking deck officer on board.*
- *The pilot shall have an unrestricted tonnage licence.*
- *The vessel shall not enter waters with a draught restriction of 7.3 meters or less.*

If vessel making Transhipments:-

- *Yokohama or equivalent fenders shall be used, and*
- *No hold harmless shall be given, and*
- *The vessel shall comply with all applicable recommended regulations and/or guidelines for transhipment at sea.*

## ■ Underwriting Considerations

Is vessel Ice classed?

Will vessel receive Ice Breaker escort?

## ■ Primary Hazards

Ice (November to March)

Fog (worst June & July)

Reefs (depths of 4m or less)

## ■ Additional Information

### *Ice Maps*

National Ice Centre

<http://www.natice.noaa.gov>

White Sea

[http://www.natice.noaa.gov/pub/East\\_Arctic/White\\_Sea](http://www.natice.noaa.gov/pub/East_Arctic/White_Sea)

Chukchi Sea

[http://www.natice.noaa.gov/pub/west\\_arctic/Chukchi\\_Sea](http://www.natice.noaa.gov/pub/west_arctic/Chukchi_Sea)

### *Links*

Port of Vitino

<http://www.vitino.ru/eng/sail.htm>

Port of Archangel

<http://www.arhport.ru/eng/arhport-about.htm>

Additional information, including prevailing conditions, for this region is available from members of the Joint Hull Committee – Navigating Limits Working Group
---